

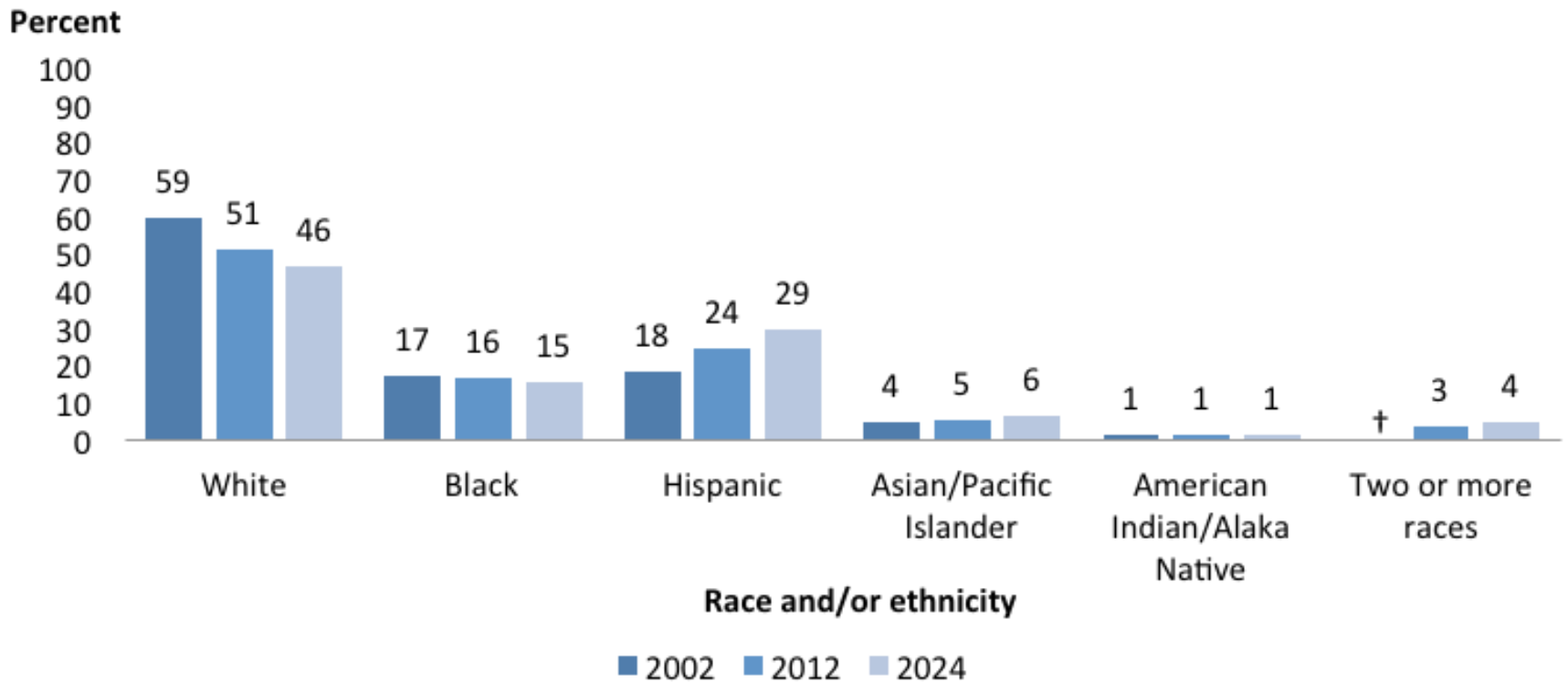
**HUMAN RESOURCES
REPORT TO
BOE**

DECEMBER 11TH, 2017

NATIONAL STUDENT RACIAL DIVERSITY

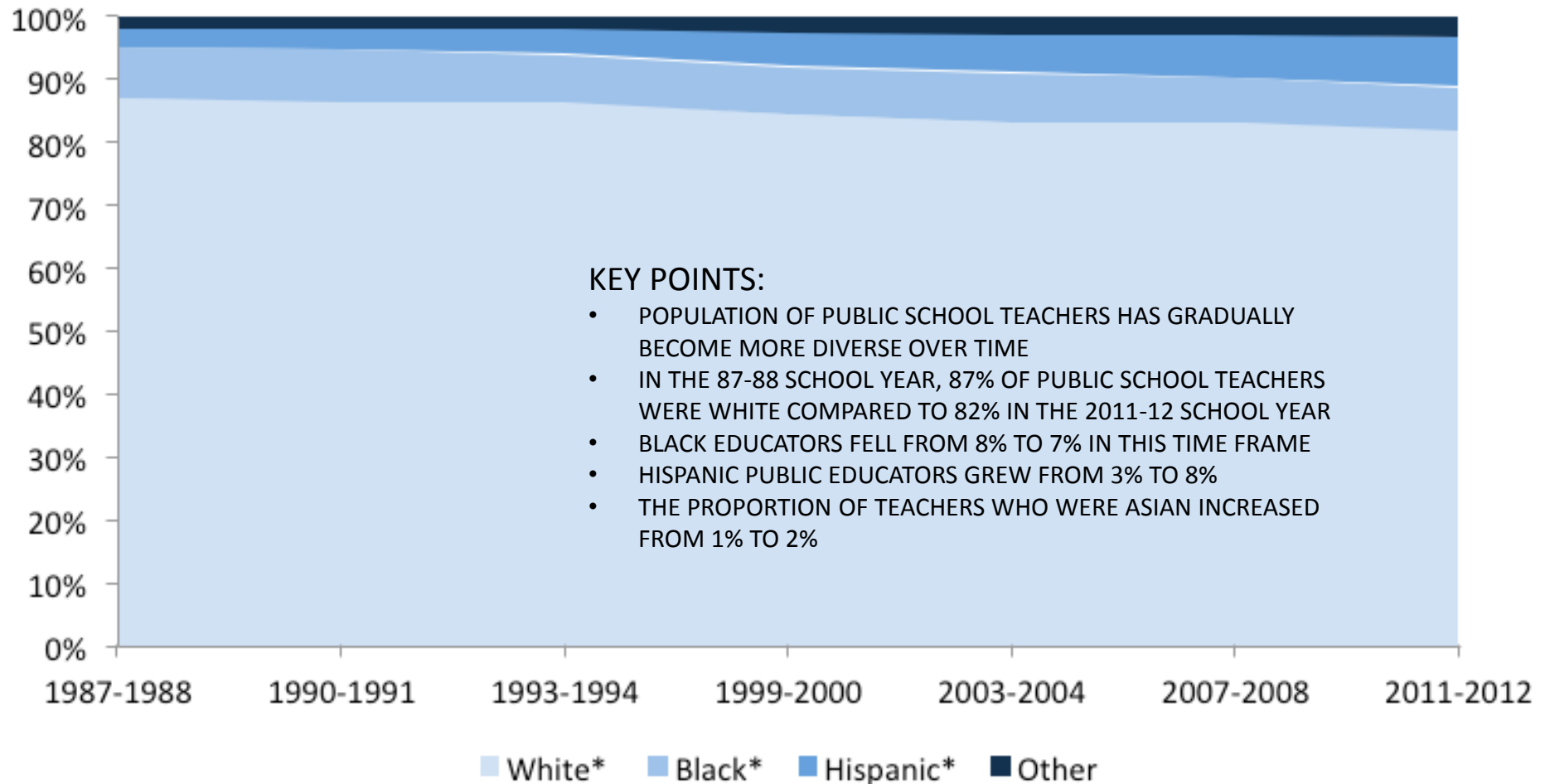
NATIONAL CENTER FOR EDUCATION STATISTICS (NCES)

Figure 1. Percentage distribution of students enrolled in public elementary and secondary schools, by race and ethnicity: fall 2002, fall 2012, and fall 2024



NATIONAL TEACHER RACIAL DIVERSITY

NATIONAL CENTER FOR EDUCATION STATISTICS (NCES)



LPS Student Demographics 2017

Race/Ethnicity	Number of Students	Percentage of Students
White	7,263	66.5%
Hispanic	1,096	9.9%
Multi-Racial	1,049	9.6%
Black or African American	680	6.2%
Asian	444	4%
American Indian or Alaskan Native	349	3.1%
Native Hawaiian or other Pacific Islander	27	.024%

Total Enrollment: 10,908 students

LPS STAFF RACIAL DIVERSITY

Certified

	2014-15	2015-16	2016-17	2017-18
American Indian/Alaskan Native	11 (1.09%)	9 (0.89%)	11 (1.09%)	11 (1.11%)
Black or African American	22 (2.19%)	25 (2.46%)	22 (2.19%)	24 (2.43%)
White	938 (93.24%)	941 (92.62%)	933 (92.74%)	914 (92.42%)
Asian	6 (0.60%)	7 (0.69%)	5 (0.50%)	7 (0.71%)
Native Hawaiian or Other Pacific Islander	1 (0.10%)	1 (0.10%)	1 (.009%)	1 (0.10%)
Hispanic	28 (2.78%)	33 (3.25%)	34 (3.38%)	32 (3.24%)
TOTAL	1006	1016	1006	989

LPS STAFF RACIAL DIVERSITY

Classified

	2014-15	2015-16	2016-17	2017-18
American Indian/Alaskan Native	22 (2.92%)	18 (2.23%)	25 (3.30%)	23 (2.96%)
Black or African American	42 (5.58%)	57 (7.53%)	58 (7.66%)	60 (7.74%)
White	642 (85.5%)	629 (83.2%)	615 (81.2%)	630 (81.2%)
Asian	13 (1.72%)	11 (1.45%)	11 (1.45%)	14 (1.8%)
Native Hawaiian or Other Pacific Islander	1 (0.01%)	2 (0.02%)	1 (0.01%)	1 (0.01%)
Hispanic	32 (4.25%)	39 (5.15%)	47 (6.20%)	47 (6.06%)
TOTAL	752	756	757	775

LPS RACIAL DIVERSITY

Administrators

	2014-15	2015-16	2016-17	2017-18
Black or African American	3 (5.00%)	3 (5.26%)	4 (6.78%)	4 (6.90%)
White	57 (95.00%)	54 (94.74%)	55 (93.22%)	54 (93.10%)
Hispanic	3 (5.00%)	3 (5.26%)	3 (5.08%)	2 (3.45%)
TOTAL	60	57	59	58

LPS ADDITIONAL ASSIGNMENTS AND NON CONTRACTED RACIAL DIVERSITY

	2014-15	2015-16	2016-17	2017-18
American Indian/Alaskan Native	4 (2.19%)	5 (2.73%)	5 (2.84%)	7 (5.46%)
Black or African American	13 (7.14%)	13 (7.10%)	14 (7.95%)	10 (7.81%)
White	149 (81.8%)	151 (82.51%)	137 (77.8%)	98 (76.5%)
Asian	4 (2.19%)	3 (0.16%)	4 (2.27%)	3 (0.23%)
Native Hawaiian or Other Pacific Islander	1 (0.05%)	0	0	0
Hispanic	11 (6.04%)	11 (6.01%)	16 (9.09%)	10 (7.81%)
TOTAL	182	183	176	128

LPS RACIAL DIVERSITY

TOTAL STAFF

	2014-15	2015-16	2016-17	2017-18
American Indian/Alaskan Native	37 (1.85%)	32 (1.58%)	41 (2.04%)	41 (2.10%)
Black or African American	80 (3.99%)	99 (4.89%)	98 (4.89%)	98 (5.01%)
White	1789 (89.23%)	1778 (87.76%)	1743 (86.93%)	1698 (86.81%)
Asian	23 (1.15%)	22 (1.09%)	20 (1.00%)	24 (1.23%)
Native Hawaiian or Other Pacific Islander	2 (0.09%)	2 (0.10%)	3 (0.15%)	4 (0.20%)
Hispanic	74 (3.69%)	93 (4.59%)	100 (4.98%)	91 (4.65%)
TOTAL	2005	2026	2005	1956

RECRUITMENT

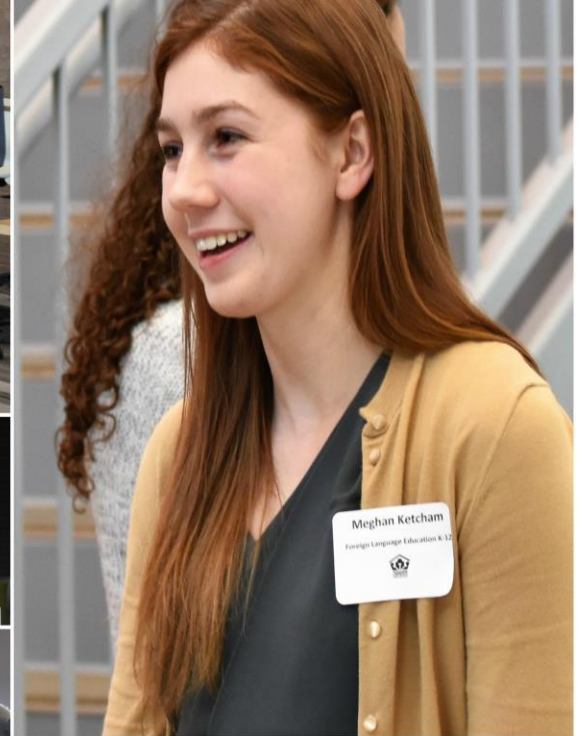
NEW RECRUITMENT SITES

Pittsburgh Education
Recruitment
Consortium (PERC)



National Alliance of
Black School
Educators
Conference

CERTIFIED RECRUITMENT FAIR



CLASSIFIED RECRUITMENT FAIR

Full and Part-time positions available.

Great Benefits Package!

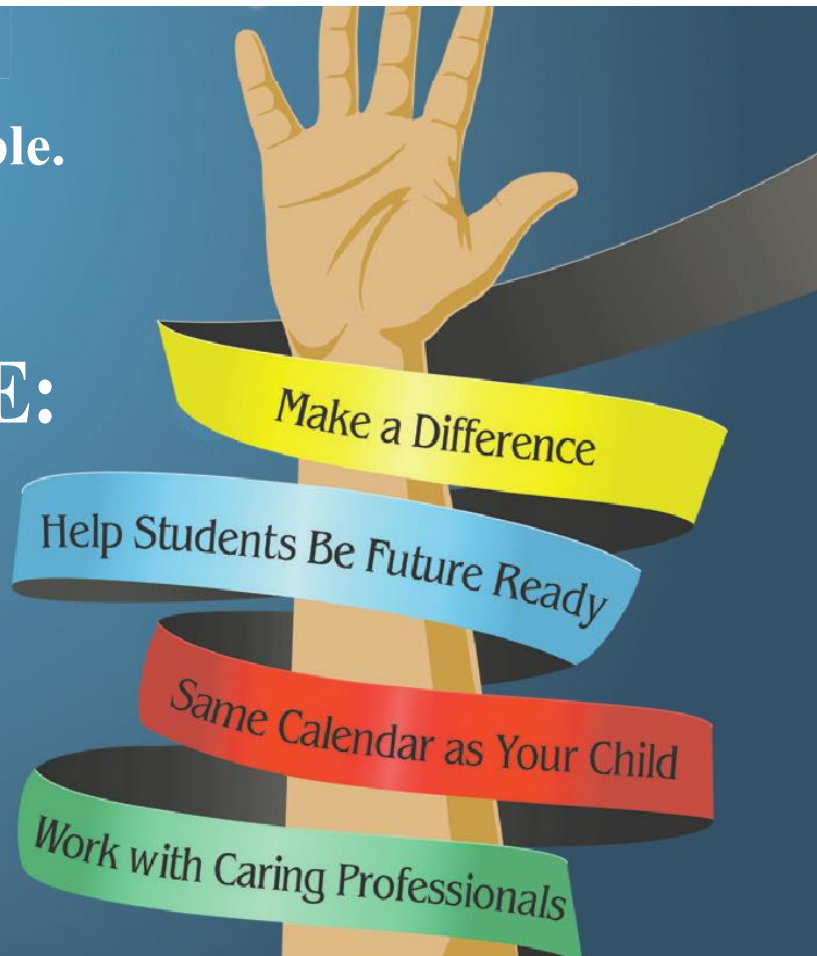
POSITIONS AVAILABLE:

Paraeducators

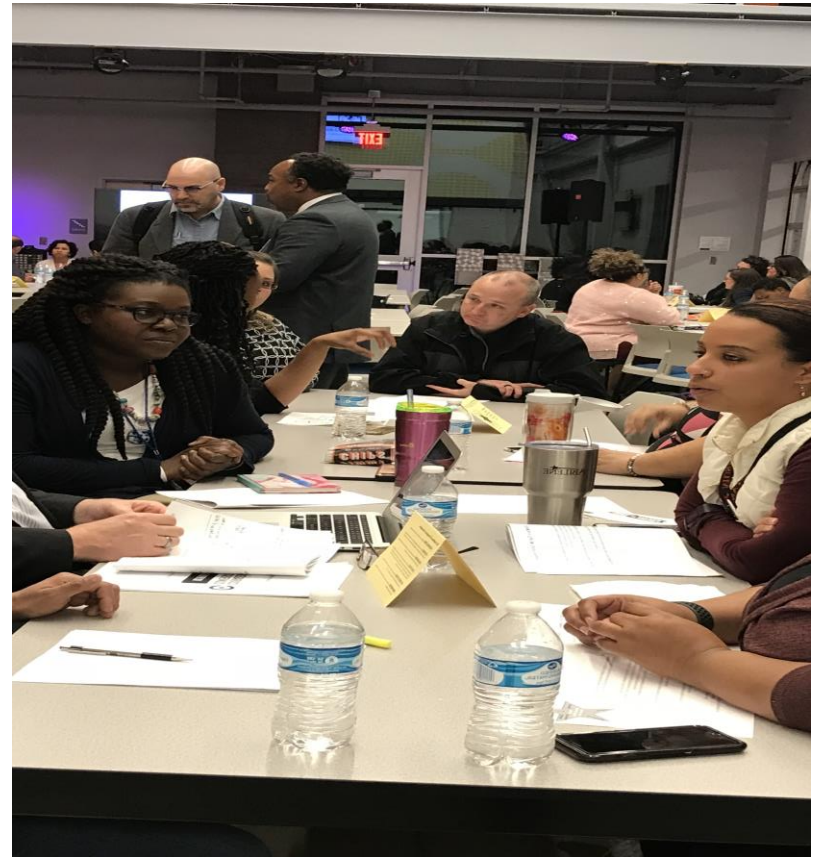
Custodians

Food Service

Training provided.
For more information:
www.usd497.org/apply



Partnerships for Academically Successful Students



EXPLORATION OF PARA PATHWAY LICENSURE PROGRAM



FHSU



Questions??